

CENTRAL UNIFIED SCHOOL DISTRICT

BOARD BITS

Highlights of the Regular Board Meeting of June 22, 2010

CONSOLIDATED APPLICATION, PART 1

The Board of Trustees adopted the 2010-2011 Consolidated Application, Part I. The Consolidated Application, Part I collects information related to the district's intentions to participate in the 2010-2011 consolidated programs, legal assurances of compliance as required by state and federal statute, and other required program participation. It identifies the type of funding the district is requesting and rankings of schools scheduled to receive categorical aid during the school year. Central Unified is eligible to apply for 6 of the 10 available state and federal programs. This information has been approved by the State Compensatory Education District Advisory Committee (DAC) and the District English Learner Advisory Committee (DELAC) as required.

2010-2011 CUTA TENTATIVE CONTRACT

The Board of Trustees approved the 2010-2011 tentative contract agreement between Central Unified School District and Central Unified Teachers Association Chapter 961, effective July 1, 2010. Included in the contract are modifications to the articles pertaining to teaching day, hours and school calendar, teacher internship program, personal necessity leave, job sharing, transfer and reassignment, overage account, and furlough days.

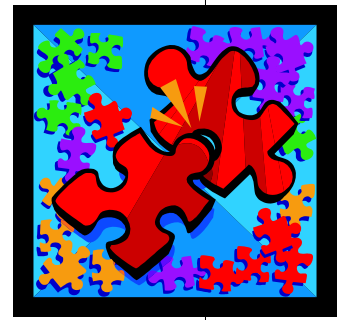
GIFTS TO THE DISTRICT

The Board of Trustees accepted the following gifts to the district:

- ◆ Harvest Elementary School received \$132.99 from AETNA Volunteer Giving Campaign for the ASB fund
- ◆ Houghton-Kearney Elementary School received \$213 from PG&E Corporation Foundation on behalf of Jennifer Zimmer Webb for the ASB fund
- ◆ Rio Vista Middle School received \$275 from Central Unified Teachers Association for the ASB fund to be used for Eighth Grade Promotion

MIDDLE SCHOOL BOUNDARY CHANGES

The Board of Trustees approved the recommendation regarding attendance boundary creation in anticipation of the opening of Glacier Point Middle School in August 2011. Factors considered in boundary development included current student demographics, school feeder patterns, student transportation costs, and future home construction. With the assistance of a demographer, four proposed boundary models (Plans A through D) were presented at community meetings. As a result of feedback, a fifth model (Plan E) was developed. Plan A was ultimately selected and is available for review on the district website.



In this issue:

- ◆ Consolidated Application, Part I
- ◆ Positive Behavior Interventions and Supports
- ◆ Middle School Boundary Changes
- ◆ Draft Proposed Preliminary 2010-2011 Budget

**PROPOSED
PRELIMINARY
2010-2011
BUDGET**

The Board of Trustees adopted the proposed preliminary 2010-2011 annual budget. Total projected revenues are down from 2009-2010 by approximately \$8.7 million, primarily due to state budget reductions. That, coupled with increasing annual obligations such as salary schedules, health and welfare costs, and utilities, compose the \$11.3 million budget gap. Total projected expenditures are down approximately \$8.9 million. This net decrease is the result of personnel and operational reductions. This budget will receive a Positive Certification from the Fresno County Office of Education; thus, the district will be able to meet its 2010-2011 financial obligations plus two additional years.

**STANDARDS-
BASED REPORT
CARD FOR
KINDERGARTEN**

The Board of Trustees received a request to approve acceptance of a standards-based reporting system for kindergarten to begin implementation in the fall of 2010. The report card will provide information on the student's developmental abilities and progress in attaining grade level standards. It was developed by the Kindergarten Cadre, which consists of kindergarten teachers and district personnel. The report card will provide a meaningful tool for parents as they work in partnership with the teacher to support their child's academic and social learning and development. This item will return to the next meeting for action.

**SUSPENSIONS
AND EXPULSIONS
YEAR-END
REPORT**

The Board of Trustees received information regarding the Suspensions and Expulsions Year-End Report. For the 2009-2010 school year there were 1,410 students suspended in Central Unified compared to 1,609 suspended in 2008-2009. This is a decrease of 199 students suspended from school. Additionally, there were 453 fewer days of student suspension during 2009-2010 compared to 2008-2009, which supports the goal of student learning by reducing the amount of lost instructional time. There were 34 expulsions in 2009-2010 versus 33 in 2008-2009. The reduction in days of suspension equates to a savings of approximately \$15,000.

**INTER-DISTRICT
TRANSFER YEAR-
END REPORT**

The Board of Trustees received information on the Inter-District Transfer Year-End Report. The inter-district transfer policy states that students must have a record of good attendance, no record of serious or continuing discipline problems and satisfactory academic achievement, and there must be space availability. During the 2009-2010 school year, Central Unified received 339 requests for incoming inter-district permits (for students who reside in a district other than Central). Of those requests, 250 were approved and 89 were denied. Also during 2009-2010 school year, Central Unified received 304 requests for outgoing inter-district permits (for students who reside in Central and request to attend a school in another district). Of those requests, 254 were approved and 50 were denied. The net result was 41 additional students added to the district through the inter-district transfer process, which equals approximately \$200,000 in increased ADA.



Board Bits is published on the second and fourth weeks of the month, following each Central Unified School District Board of Trustees meeting.

Questions regarding the content of this publication may be directed to:

Courtney Roque-Bautista
Special Projects Coordinator
croque@centralusd.k12.ca.us
274-4700, ext. 119

Board of Trustees:

Cindy Berube, Board President
Phil Rusconi, Vice President
William Duane Peverill, Clerk
Diana Milla
Judith Geringer
George Wilson Jr.
Terry Cox

Superintendent:

Mr. Mike Berg

Next Regular Board Meeting:
July 13, 2010
at 6:00 p.m.
CHS-East Campus
Performing Arts Center